

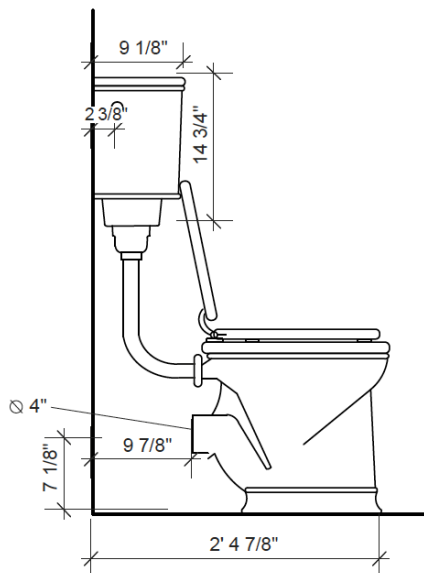
# LONSDALE LAVATORY PAN WITH LOW LEVEL CISTERN - USA

The Lonsdale lavatory pan is shown with a low level cistern, matt black painted wooden seat and a graphite flush handle. It can be used with a high level or a concealed cistern.

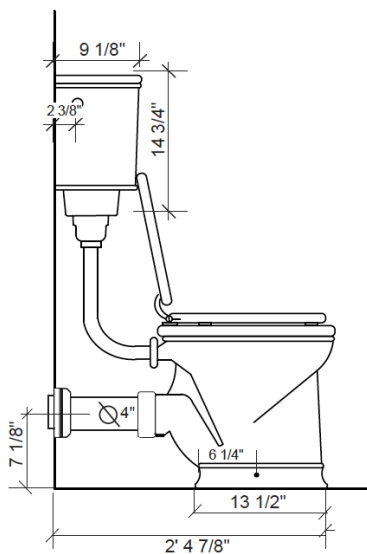
Produced in a traditional manner in England.



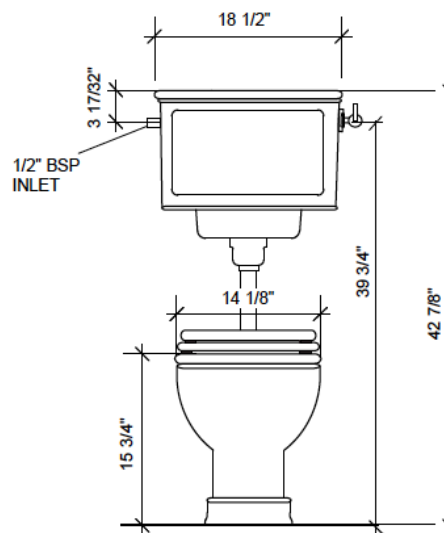
Side view



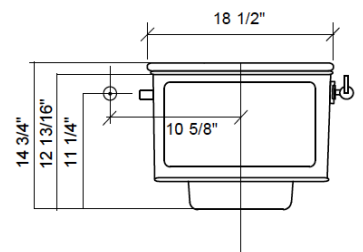
Side view with optional vertical pan connector



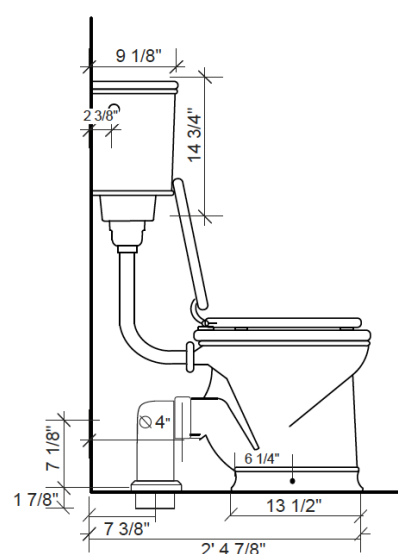
Front view



Cistern inlet pipe position diagram



Side view with optional vertical pan connector

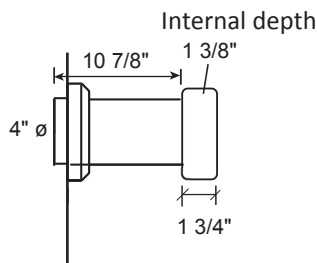


THE  
WATER/  
MONOPOLY

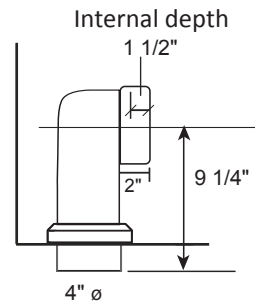
# LONSDALE LAVATORY PAN WITH LOW LEVEL CISTERN - USA

(page 2/2)

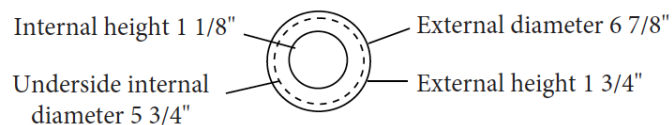
Horizontal pan connector



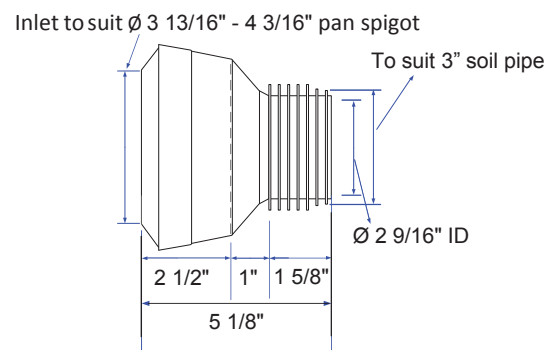
Vertical pan connector



Collar for horizontal and vertical pan connector



Mac 3" Pan Adaptor for US



## Technical Details

Assembly/Configuration: 2 piece water closet + cistern  
 Bowl shape: Elongated  
 Flush motion: Flush handle  
 Flush position: Right  
 Flush Primary Material: Brass  
 Flushing Technology: Syphonic Flush / Dudley Turbo  
 Depth: 28 7/8"  
 Height: 42 7/8"  
 Inlet connection size: 1/2"  
 Inlet connection type: Male BSP  
 Installation type: Wall hung cistern / freestanding pan  
 Cistern width: 18 1/2"  
 Outer Rim Shape: Elongated  
 Seat height: 15 3/4"  
 Application: Bathroom / Cloakroom  
 Trapseal depth: 2 1/2"  
 Water Pressure Maximum: 85.0 psi  
 Water Pressure Minimum: 20.0 psi  
 Water Pressure Recommended: 45.0psi  
 Outlet size: 4"  
 Water consumption 6 litres / 1.585 USA gallons  
 Optional china pan connector, straight or 90° available  
 Fixing is through side of pan on to horizontal bent brackets under the pan (supplied)

## Codes & Standards

Ceramic complies to CE Standards  
 Flush mechanism complies to WRAS Standards



## Product Notes

All dimensions are based on original specifications  
 and are subject to change and variation.