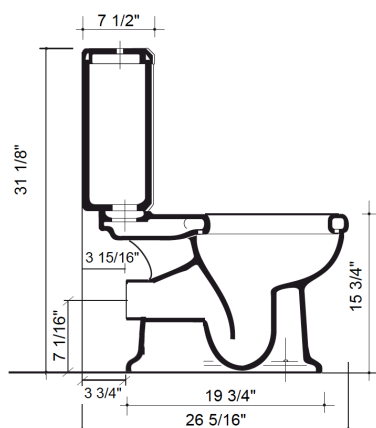


SOHO LAVATORY PAN WITH CLOSE COUPLED CISTERN - US

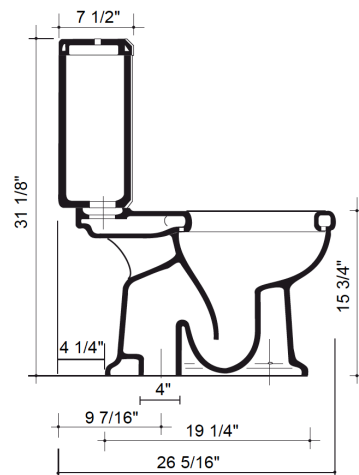
The Soho lavatory pan is shown with a close coupled cistern, matt black painted wooden seat and a graphite flush handle. It can also be used with a low level, high level or concealed cistern.



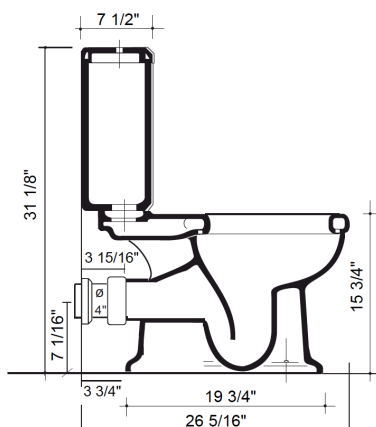
Side view with p-trap pan



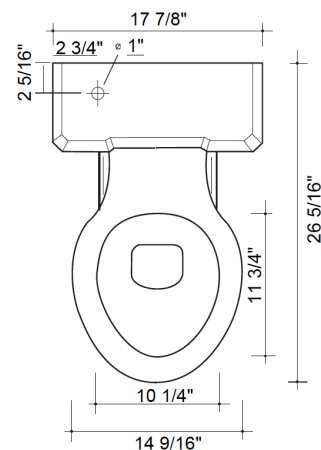
Side view with s-trap pan



Side view with optional vertical pan connector



Front view



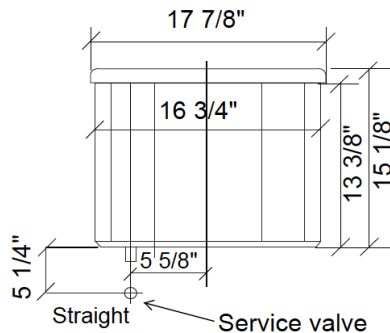
THE
WATER/
MONOPOLY

10/14 Lonsdale Road, London, NW6 6RD
+44 (0)20 7624 2636 thewatermonopoly.com

SOHO LAVATORY PAN WITH CLOSE COUPLED CISTERN - US

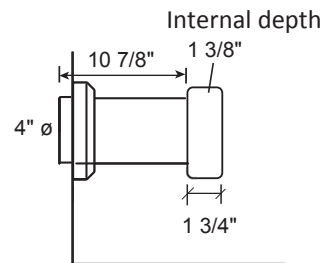
(page 2/2)

Cistern inlet pipe position diagram

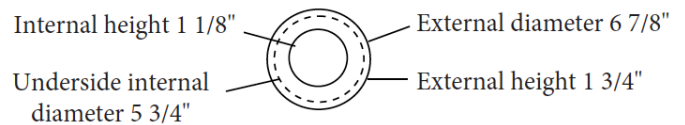


Position of cold feed pipe from wall. Straight service valve and elbow 10 3/4" from floor

Horizontal pan connector



Collar for horizontal pan connector



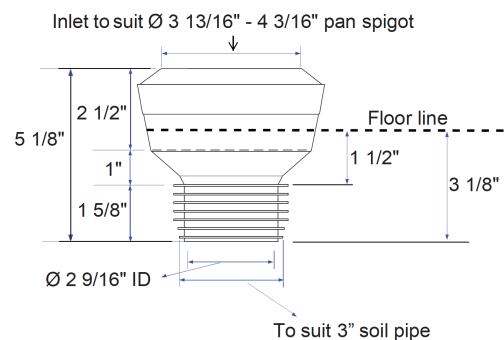
Technical Details

Assembly/Configuration: 2 piece water closet
+ close coupled cistern
Bowl shape: Elongated
Flush motion: Flush lever
Flush position: Right hand
Flush Primary Material: Brass
Flushing Technology: Syphonic Flush
Depth: 26 5/16"
Height: 31 1/8"
Inlet connection size: 1/2"
Inlet connection type: Male threading
Installation type: Wall hung cistern (not freestanding)
Cistern width: 17 7/8"
Outer Rim Shape: Elongated
Rim height: 15 3/4"
Application: Bathroom / cloakroom
Water pressure maximum: 85.0 psi
Water pressure minimum: 20.0 psi
Water pressure recommended: 45.0 psi
Outlet size: 4"
Water consumption: 1.585 USA gallons
Optional straight pan connector is available.
The P-trap version cannot be used with a bent ceramic pan connector, only a straight pan connector.

Product Notes

All dimensions are based on original specifications and are subject to change and variation.

Mac 3" Pan Adaptor for US



THE
WATER/
MONOPOLY