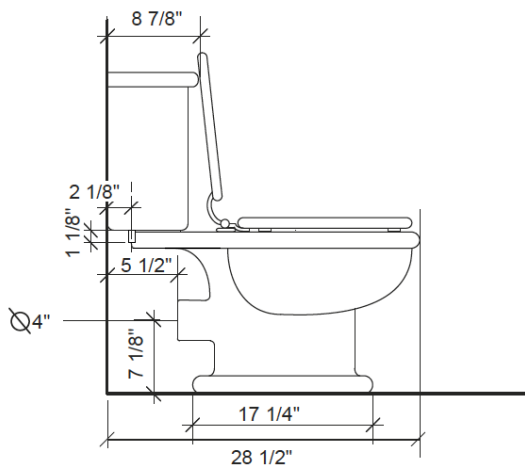


# ROCKWELL LAVATORY PAN WITH CLOSE COUPLED CISTERN - USA

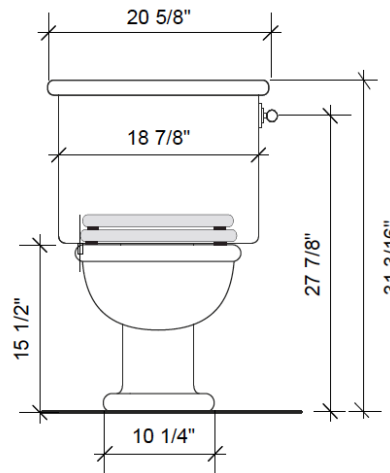
The Rockwell lavatory pan is shown here with a close coupled cistern, seat and flush handle in green/Willow. It can also be used with a low level or concealed cistern. Other colors available: white/Snowdrop, blue/Powder and yellow/Sherbet. Manufactured in England in the traditional manner.



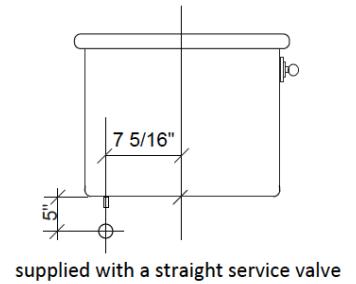
Side view



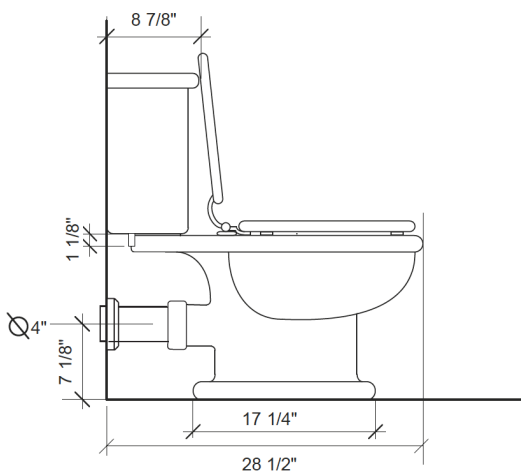
Front view



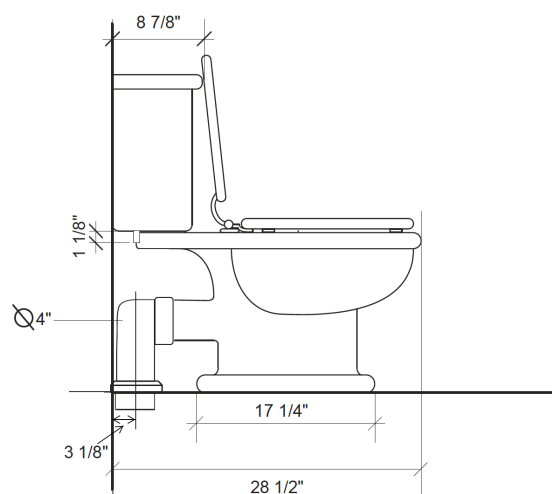
Cistern inlet pipe position diagram



Side view with optional horizontal  
pan connector



Side view with optional vertical pan  
connector. Collar can only be used  
if collar is cut or wall is cut by 3/8"

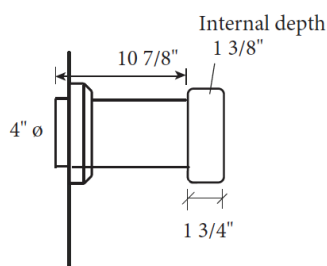


THE  
WATER/  
MONOPOLY

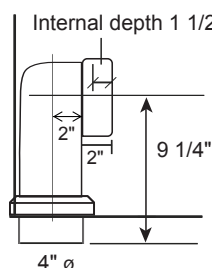
# ROCKWELL LAVATORY PAN WITH CLOSE COUPLED CISTERN - USA

(Page 2/2)

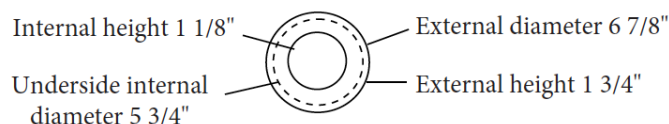
Horizontal pan connector



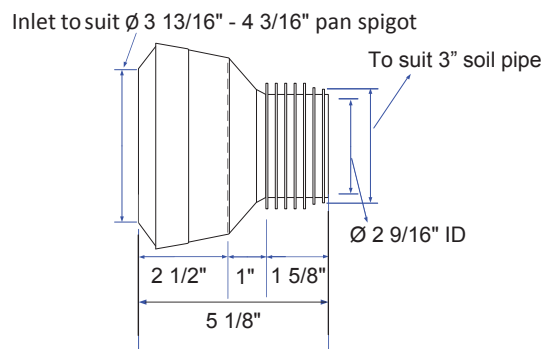
Vertical pan connector



Collar for horizontal and vertical pan connector



Mac 3" Pan Adaptor for US



## Technical Details

**Assembly/Configuration:** 2 piece water closet + cistern  
**Bowl shape:** Elongated  
**Flush motion:** Flush handle  
**Flush position:** Right  
**Flush Primary Material:** Brass  
**Flushing Technology:** Syphonic Flush / Dudley Turbo  
**Depth:** 28 1/2"  
**Height:** 31 3/16"  
**Inlet connection size:** 1/2"  
**Inlet connection type:** Male Threading  
**Installation type:** Wall hung cistern / coupled to pan cistern  
**Width:** 20 5/8"  
**Outer Rim Shape:** Elongated  
**Rim height:** 15 1/2"  
**Application:** Bathroom / Cloakroom  
**Trapseal depth:** 2.1/2"  
**Water Pressure Maximum:** 85.0 psi  
**Water Pressure Minimum:** 20.0 psi  
**Water Pressure Recommended:** 45.0psi  
**Outlet size:** 4"  
**Water consumption:** 1.585 USA gallons  
**Optional china pan connector,** straight or 90° available

## Codes and Standards

Ceramic complies to CE Standards  
 Flush mechanism complies to WRAS Standards



## Product Notes

All dimensions are based on original specifications  
 and are subject to change and variation.

**THE  
WATER/  
MONOPOLY**

10/14 Lonsdale Road, London, NW6 6RD  
 +44 (0)20 7624 2636 thewatermonopoly.com